



Burchfolio

## Everglades

---

Performance Woven Fabric

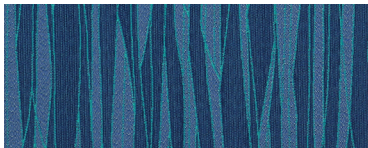
Crypton® Super Fabric

10 Colorways

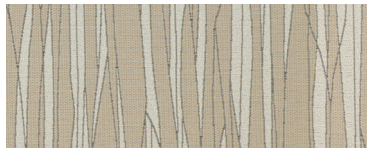
Bleach Cleanable

Free of Added FR Chemicals

Everglades is an organic stripe with a calming vibe. Fluid and graceful line-work strikes an elegant balance against intricate weave detail throughout. Subtle color washes over Everglades' palette of ten with an emphasis on light earth tones and breezy blues. There is nothing delicate about Everglades' performance thanks to Crypton's powerful protection against soils and stains.



**Atlantic** 1011375



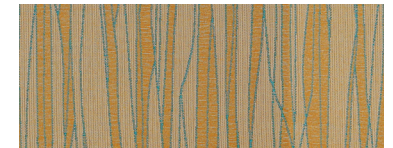
**Birch** 1011368



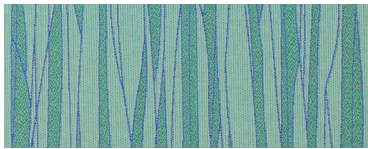
**Calypso** 1011367



**Marsh** 1011372



**Pale Ale** 1011371



**Bahama** 1011374



**Bluestone** 1011370



**Coppertone** 1011369



**Moccasin** 1011376



**Pistachio** 1011373