



Burchfolio

Luna

Performance Woven Fabric

Crypton® Super Fabric

10 Colorways

Bleach Cleanable

Free of Added FR Chemicals

Luna boasts a lofty chenille texture in a subtle grid pattern, offering both comfort and opulence. Luna is available in ten elegant and elevated shades.

Equipped with the patented power of Crypton, Luna ensures that your spaces stay radiant for years to come.



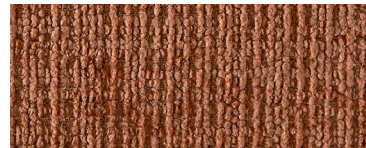
Cashmere 1012795



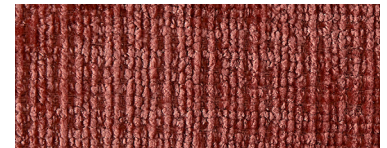
Taupe 1012794



Honey 1012788



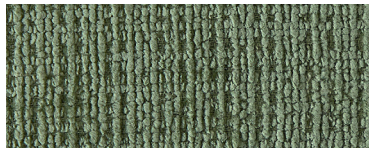
Spice 1012787



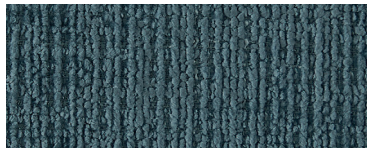
Rose 1012786



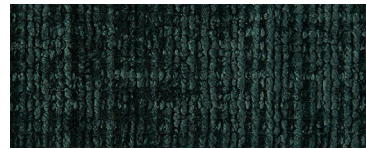
Mint 1012789



Tendril 1012790



Grotto 1012793



Emerald 1012791



Eclipse 1012792



Burchfolio

Luster

Performance Woven Fabric

Crypton® Super Fabric

12 Colorways

Bleach Cleanable

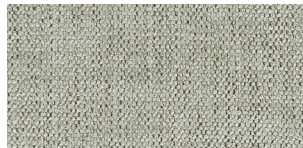
Free of Added FR Chemicals

Luster exudes refinement with its exquisite texture. Available in twelve sophisticated hues ranging from earthy neutrals to rich jewel tones, Luster adds a touch of luxury to any setting.

Equipped with the patented power of Crypton, Luster ensures that your spaces stay radiant for years to come.



Angora 1012807



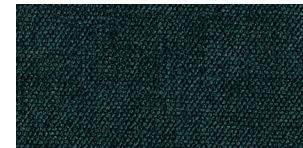
Pistachio 1012802



Lodén 1012801



Eden 1012800



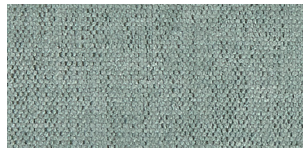
Deep Teal 1012799



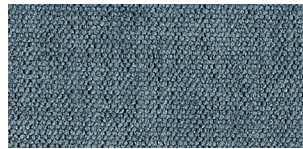
Topaz 1012806



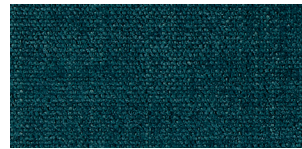
Mercury 1012804



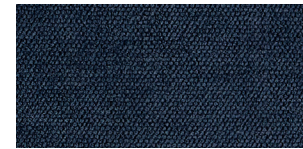
Breeze 1012803



Delft 1012796



Jewel 1012798



Twilight 1012797



Chrome 1012805

Burchfolio

Shimmer

Performance Woven Fabric

Crypton® Super Fabric

6 Colorways

Bleach Cleanable

Free of Added FR Chemicals

Shimmer captivates with its two-tone coloring and delicate sparkle. Available in six soft and soothing shades, it brings a radiant touch to any room.

Equipped with the patented power of Crypton, Shimmer ensures that your spaces stay radiant for years to come.



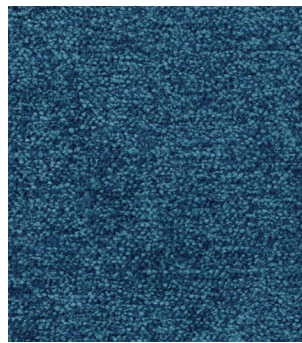
Castle 1012813



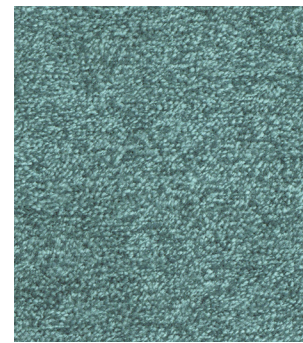
Cider 1012808



Rhubarb 1012809



Cobalt 1012811



Cruise 1012810



Slate 1012812